



# MONTHLY MEMBERSHIP PROGRESS REPORT

District 324A6

Results as of: 05/31/2019

GMT: N S SANKAR

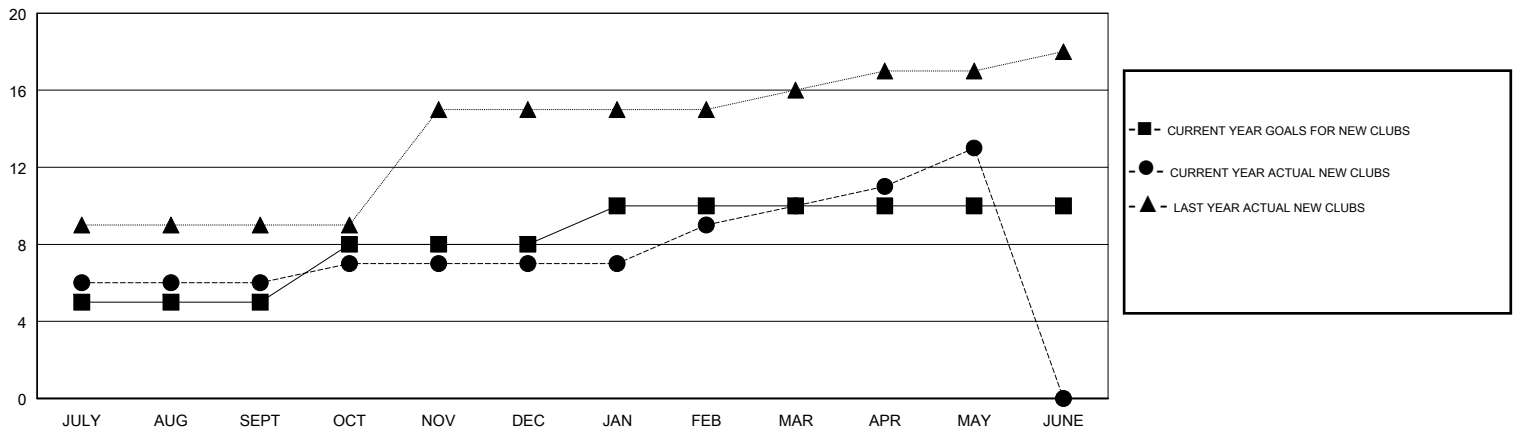
LOCATION INDIA

GMT CA

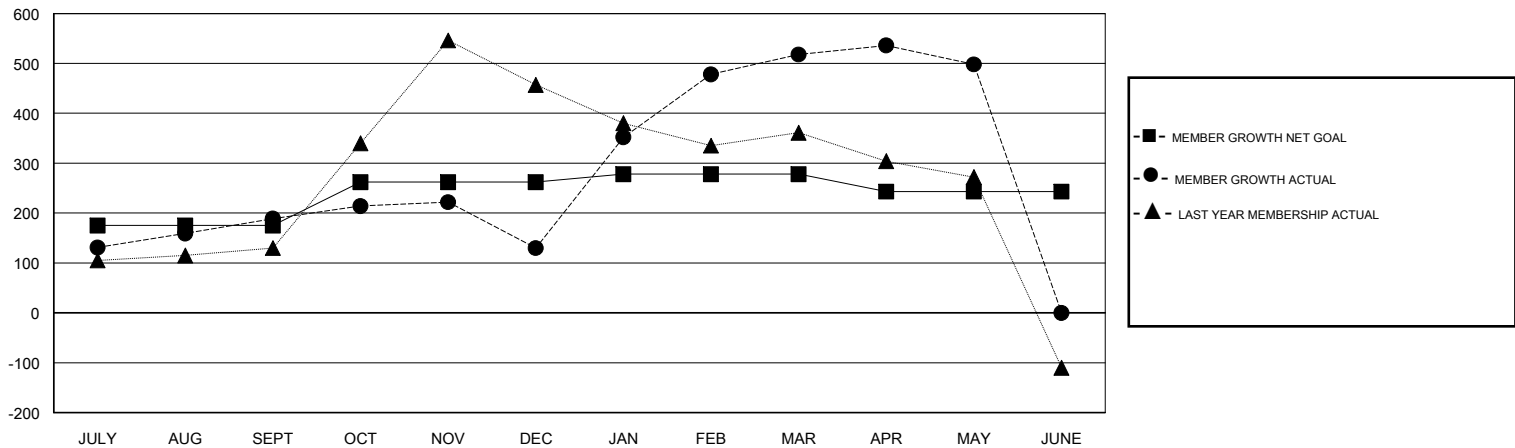
Clubs			
RESULTS FOR 2018-2019			
QUARTER	NEW CLUB GOAL	NEW CLUBS	DROPPED CLUBS
JULY/AUG/SEPT	5	6	1
OCT/NOV/DEC	3	1	2
JAN/FEB/MAR	2	3	0
APR/MAY/JUNE	0	3	0

Members			
RESULTS FOR 2018-2019			
QUARTER	MEMBER GROWTH NET GOAL	MEMBER GROWTH ACTUAL	DROPPED MEMBERS ACTUAL (including transfers)
JULY/AUG/SEPT	175	351	135
OCT/NOV/DEC	87	69	128
JAN/FEB/MAR	16	448	35
APR/MAY/JUNE	-35	94	111

GOALS AND ACTUAL NEW CLUBS CUMULATIVE



GOALS AND ACTUAL MEMBERS CUMULATIVE



DROPPED CLUBS: 3	107 CLUBS OF 142 ADDED 1 OR MORE NEW MEMBERS	<u>GENDER DISTRIBUTION</u> MALE 3,649 (71.52%) FEMALE 1,453 (28.48%) Women Percentage Fiscal Year Goal: 28%
<u>DROPPED MEMBERS</u> DECEASED 9 CLUB CANCELLED 35 OTHER 365 TOTAL 409	<a href="#">CLICK HERE FOR CUMULATIVE MEMBERSHIP DATA</a>	TOTAL FAMILY UNIT MEMBERS 2,924 FAMILY MEMBERS PAYING HALF DUES 1,721